



Flood Watch Remains In Effect

July 9, 2024
4:55 AM

Heaviest rainfall expected this morning

Key Messages

- A Flood Watch remains in effect through 7pm for areas along and east of a Cassville to Marshfield to Osage Beach line. Minor flooding of low water crossings and rivers will remain a concern.
- Additional rainfall amounts of 1-3 inches will occur today across areas east of Highway 65. Much lower amounts along the Highway 65 corridor and west.

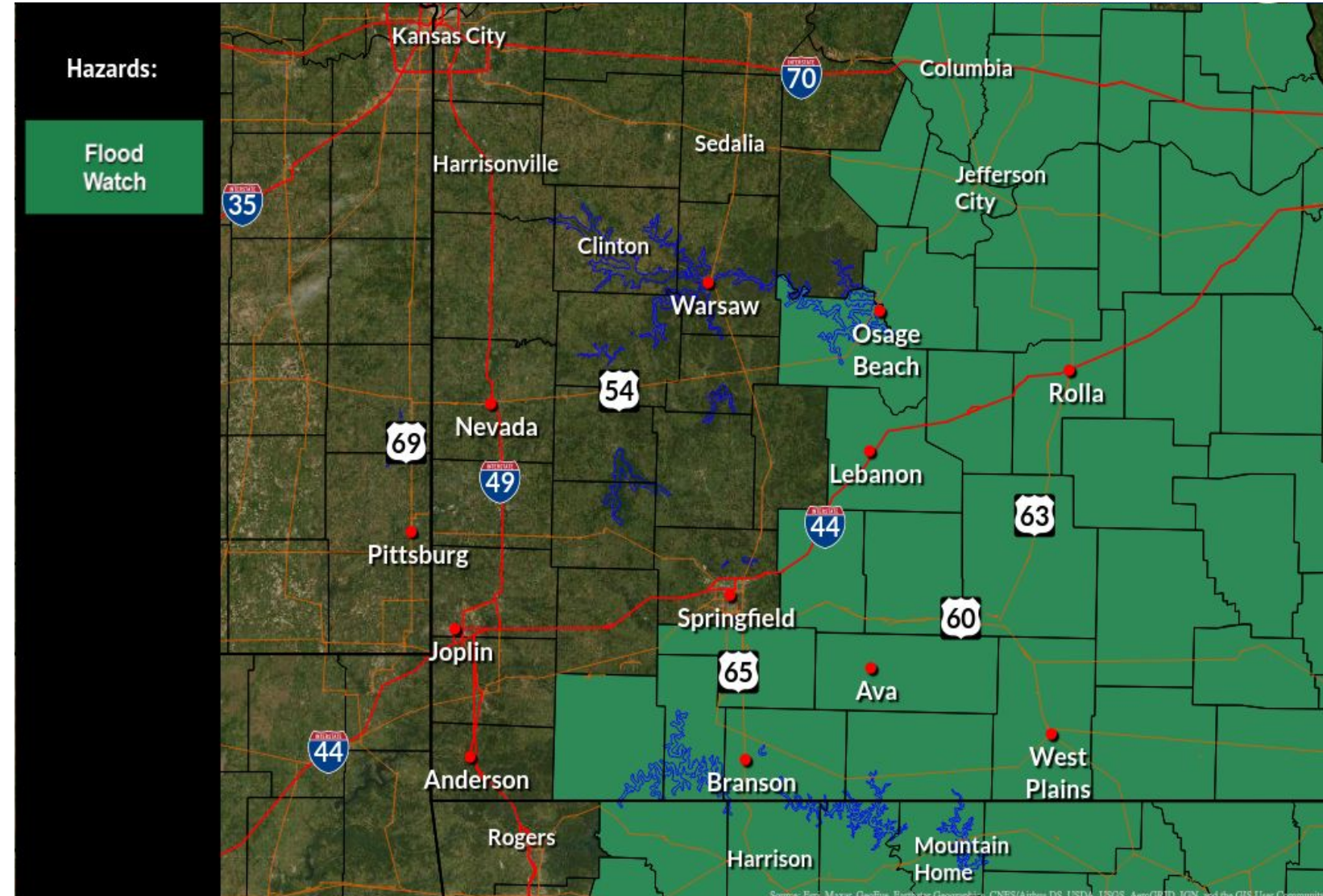
NEW

Important Updates

- No major updates.

Next Scheduled Briefing

- This is likely the last briefing of the event



Flood Watch Through 7pm





Additional Rainfall Amounts

July 9, 2024
4:55 AM

Today

What

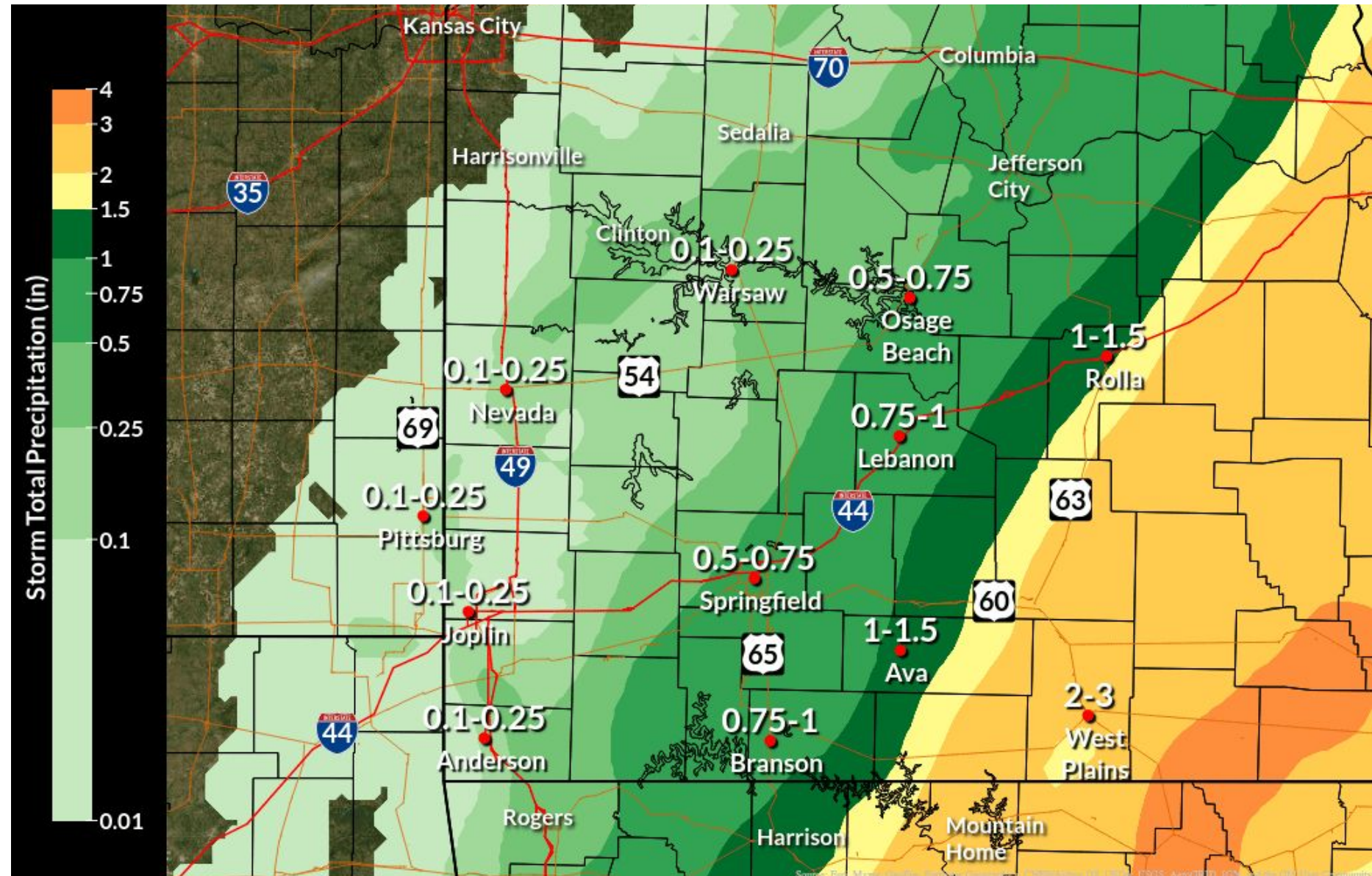
- Rainfall amounts of 1-3 inches in localized areas.

Where

- East of Highway 65, closer to the Highway 63 corridor.

When

- Majority of the rain will occur this morning.



Additional Rainfall Amounts Today



Excessive Rainfall Outlook

July 9, 2024
4:55 AM

What

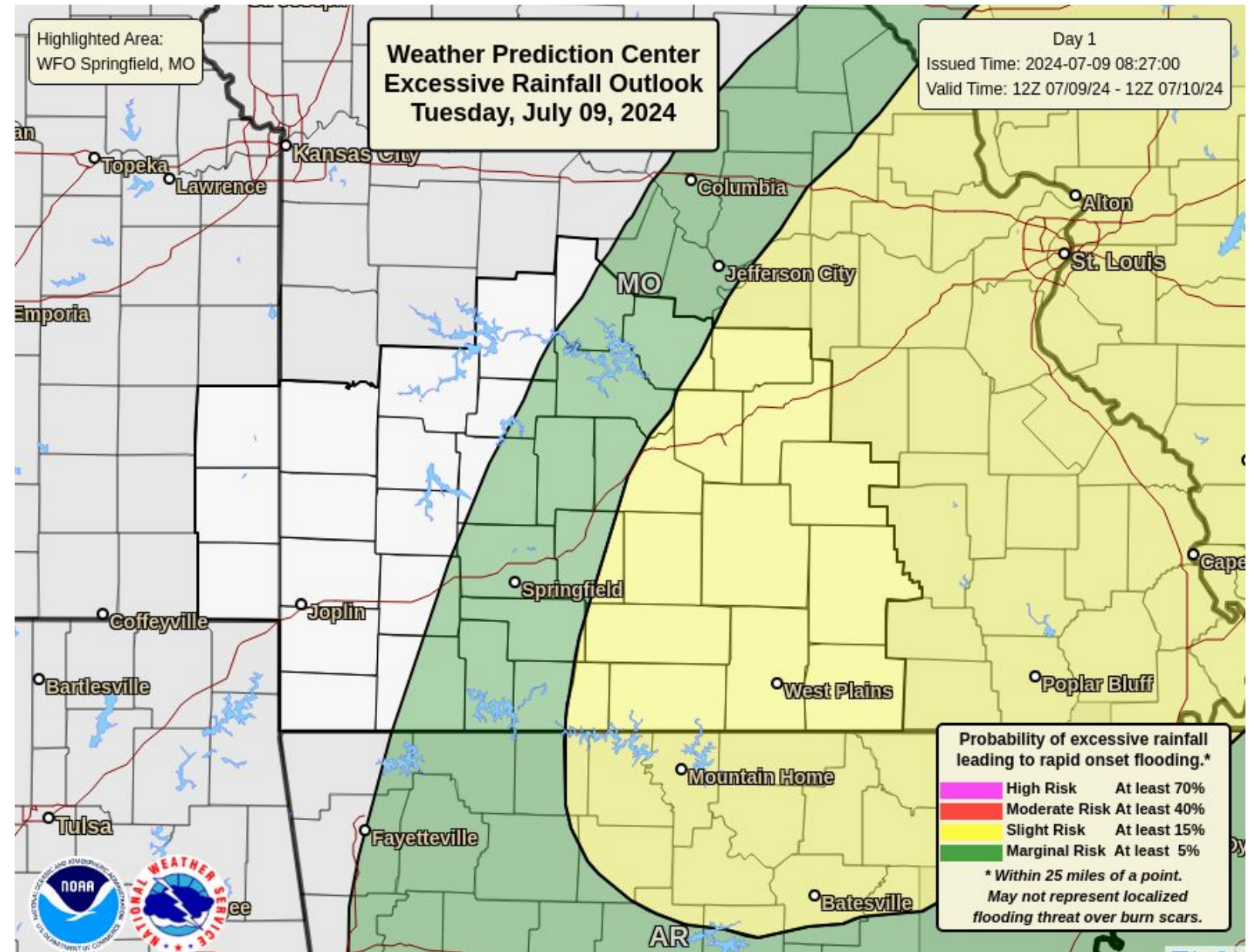
- Slight risk for excessive rainfall leading to scattered flash flooding.
- Most vulnerable are urban areas, roads, and small streams.

Where

- East Highway 65.

When

- This morning into the early afternoon. Heaviest rainfall will occur this morning.



Today's Excessive Rainfall Outlook



Rainfall Timing

Highest Chances This Morning

July 9, 2024
4:55 AM

Probability of Precipitation Forecast

7/9

Tue

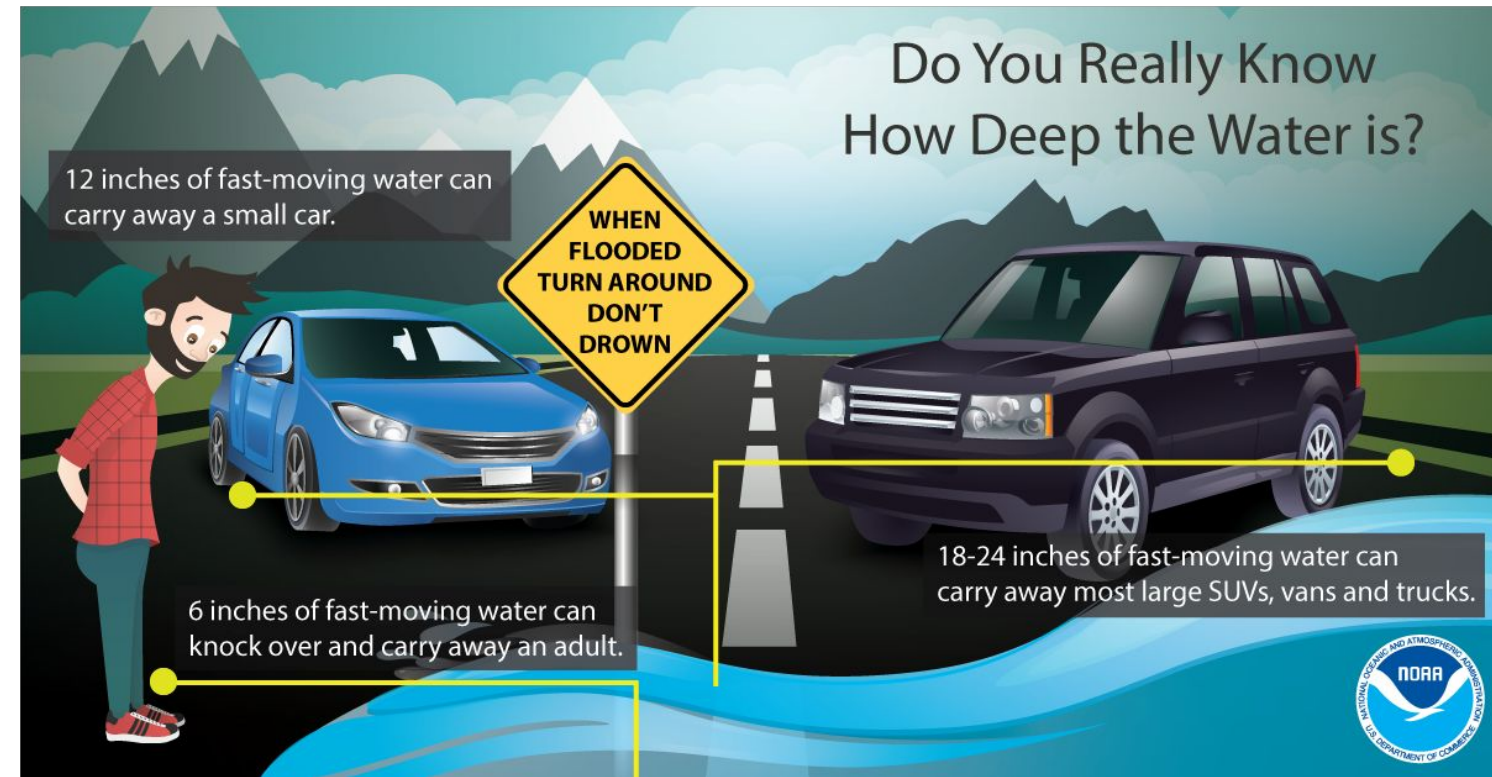
	6am	7am	8am	9am	10am	11am	12pm	1pm	2pm	3pm	4pm	5pm	6pm	7pm	8pm	9pm	10pm	11pm
Pittsburg, KS	30	30	30	30	25	25	20	15	15	10	10	5	5	0	0	0	0	0
Joplin	35	30	30	30	30	30	25	20	20	15	10	10	5	0	0	0	0	0
Bolivar	70	65	70	70	70	65	60	55	50	45	35	25	15	5	5	5	5	0
Warsaw	45	50	60	65	75	65	60	50	45	40	35	25	20	15	10	10	5	5
Springfield	90	90	90	85	80	75	70	60	55	45	35	25	15	5	5	5	5	5
Branson	95	100	90	85	80	65	55	45	40	35	30	20	15	5	5	5	5	0
Osage Beach	70	70	75	85	90	90	90	90	80	75	60	45	30	15	10	10	5	5
Mountain Grove	95	100	100	100	100	95	90	90	80	75	60	45	30	15	10	5	5	5
West Plains	100	100	100	100	100	95	90	85	75	60	45	35	25	15	10	10	5	5
Rolla	80	80	85	95	100	95	95	95	95	95	90	80	50	20	15	15	10	10





For Additional Information

- [NWS Springfield Webpage](#)
- [IDSS Point Forecasts](#)
- [Graphical Hazardous Weather Outlook](#)
- [WPC Excessive Rainfall Outlooks](#)
- [WPC Precipitation Outlooks](#)
- [NWPS Lakes and Rivers](#)
- [Submit Storm Reports](#)



Follow @NWSSpringfield

